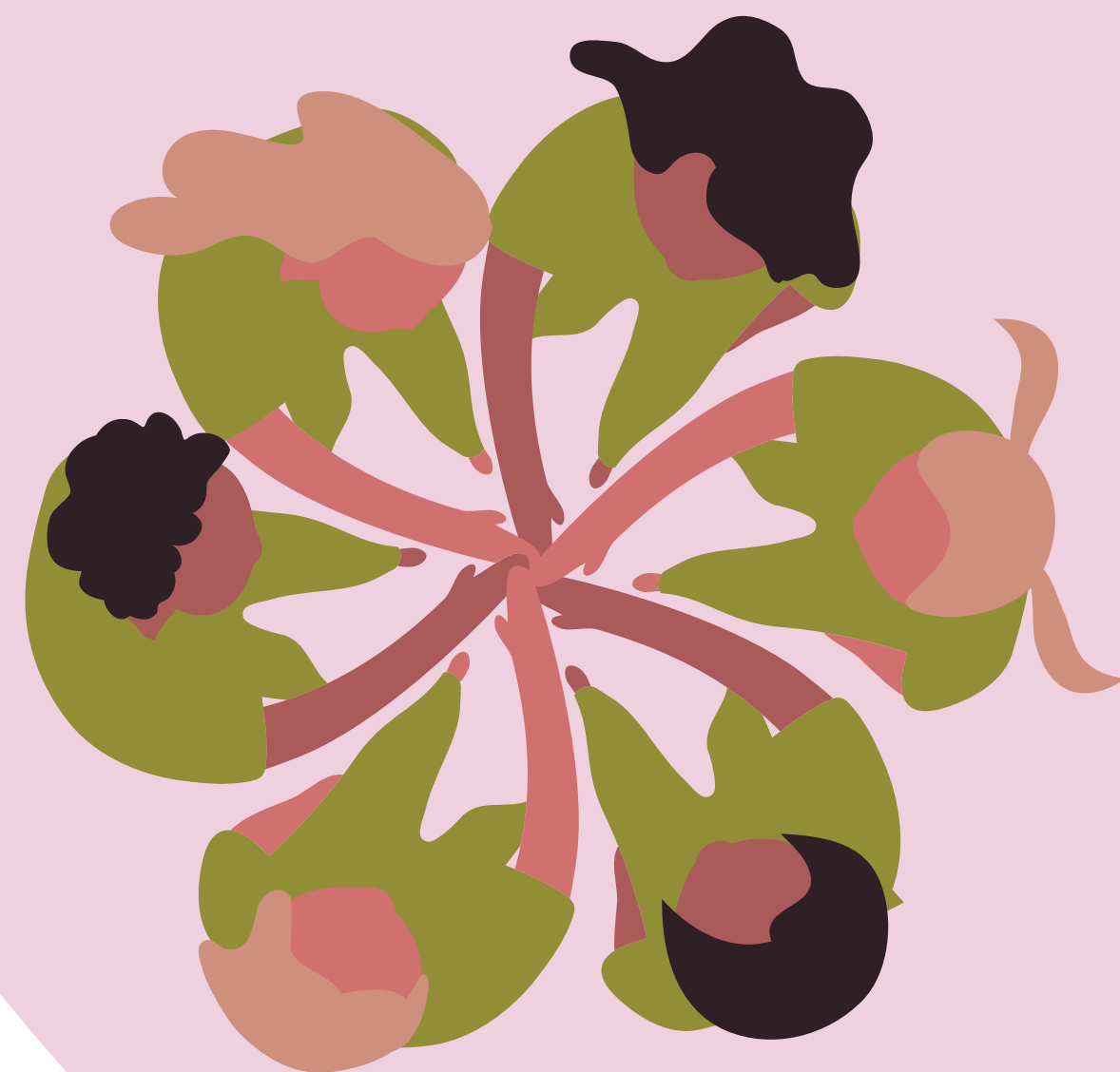
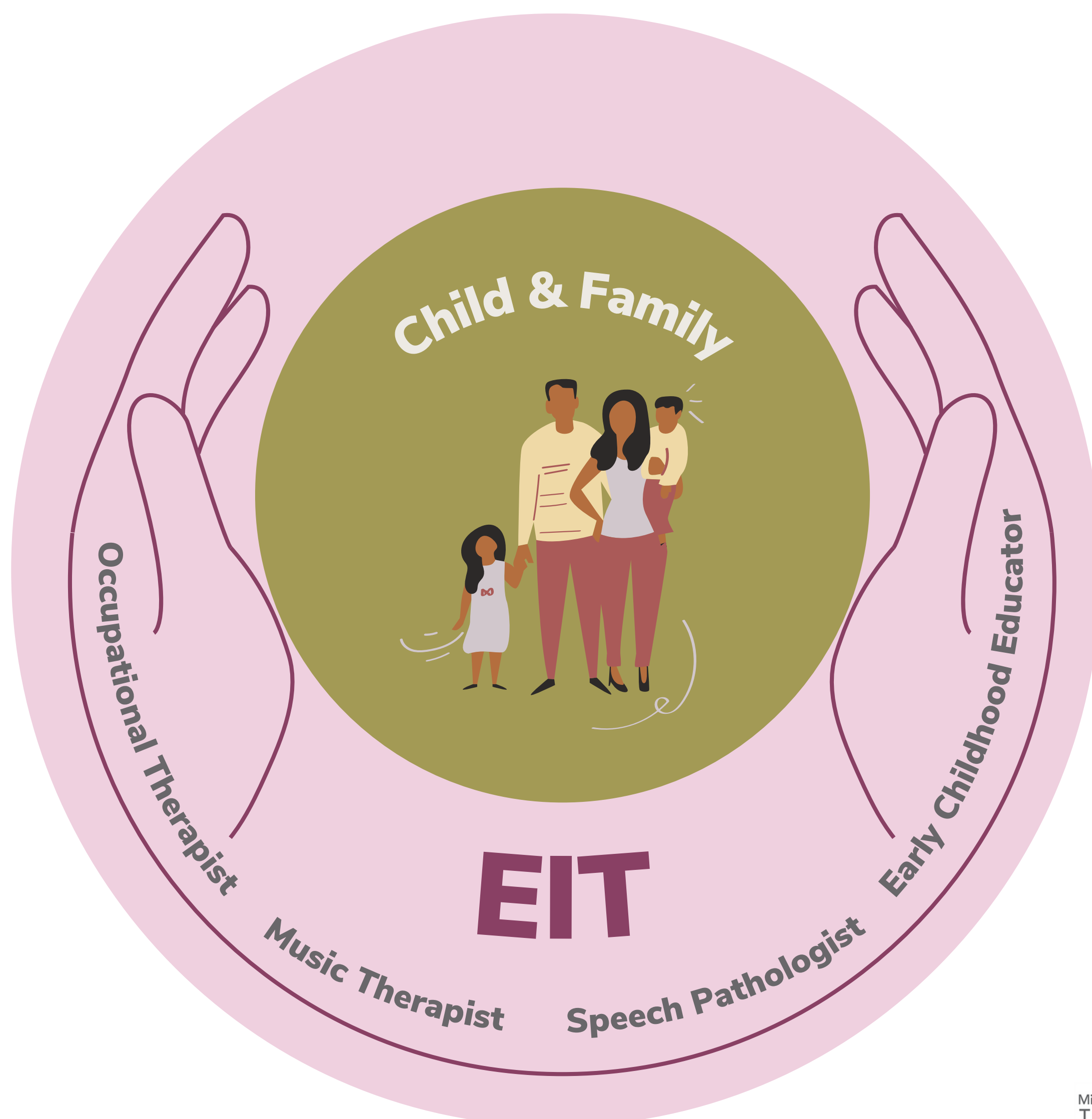


# TLC Early Intervention Therapy Program



An **Early Intervention Therapist (EIT)** supports families with a child aged **0-8** with difficulties in **multiple developmental areas**. Your child doesn't need a diagnosis to receive early intervention therapy.





# What does an EIT session look like?

## An EIT session may include:

- A home visit
- A childcare or school visit
- Discussing resources & support
- Assisting you to help your child learn
- Creating resources/plans for your child/family
- Providing information & advice
- Getting advice from their team

## Early intervention therapy at TLC is a ‘Transdisciplinary Model’.

This is when **therapists with different backgrounds work together** sharing information, ideas & strategies. **Your EIT is the person you see and talk to the most** but they are supported by other people in the team, depending on your goals and needs.

